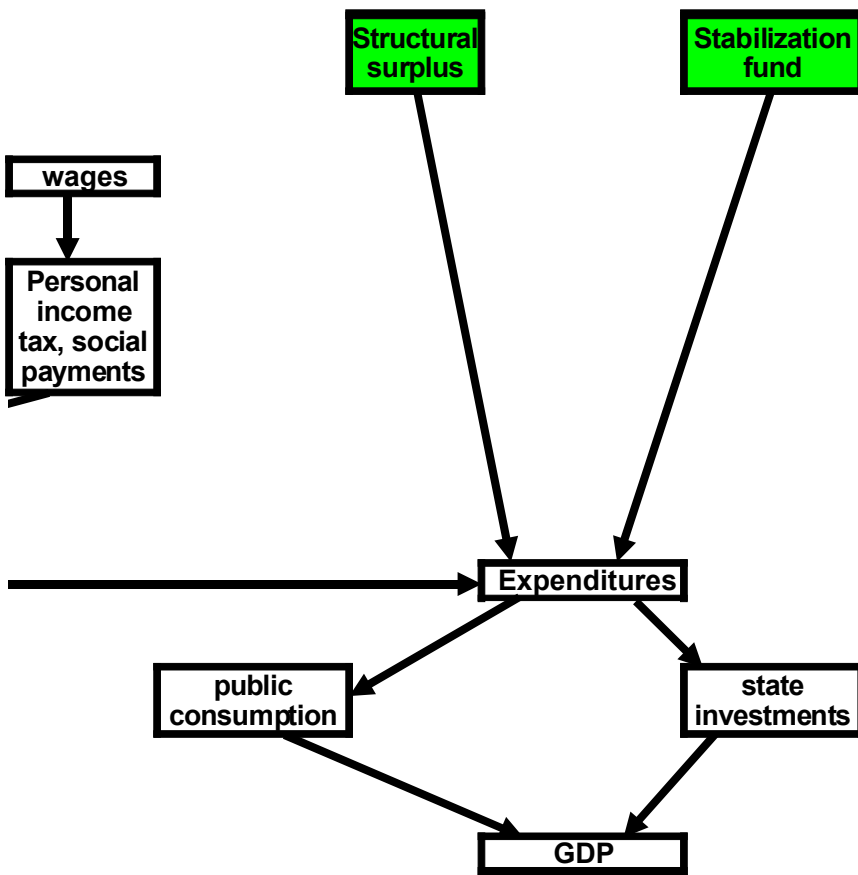
 for exogenous variables

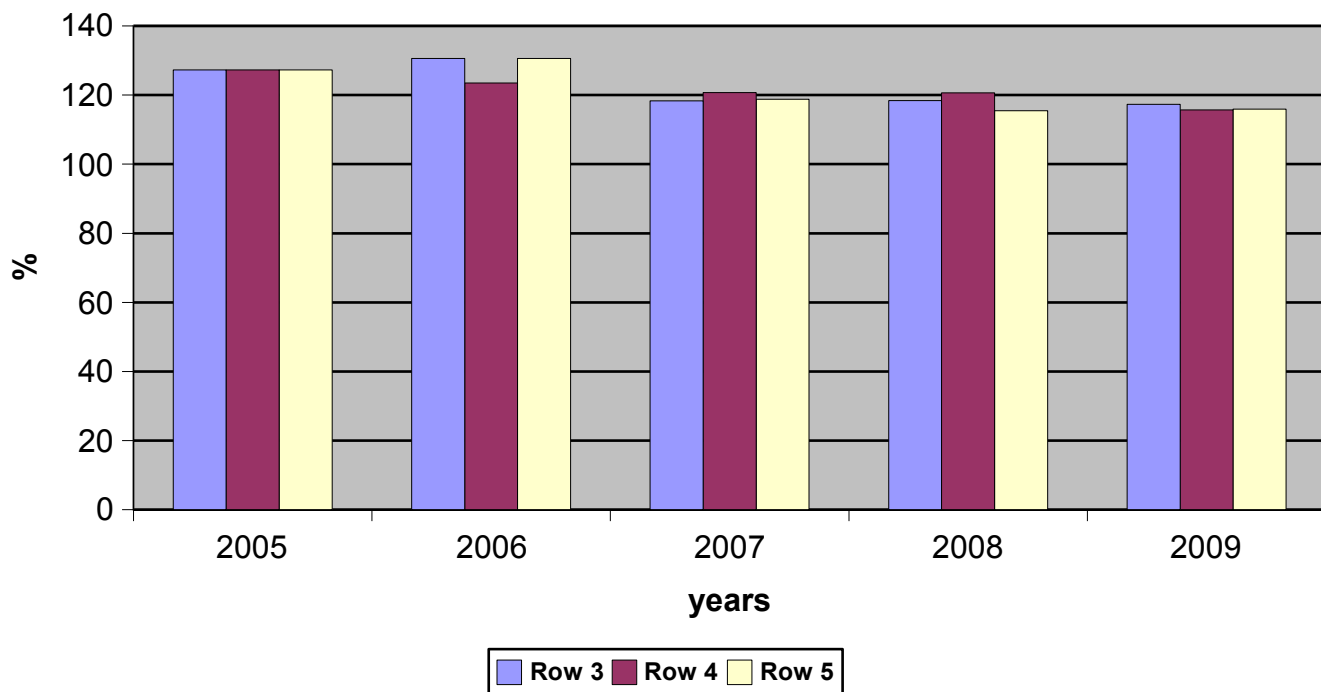


<b>THE CONSOLIDATED BUDGET REVENUES DYNAMICS, % to the previous year</b>						brent, \$/bl in 2009
	2005	2006	2007	2008	2009	
<b>Incomes, total</b>	<b>140.2</b>	<b>124.5</b>	<b>120.5</b>	<b>115.9</b>	<b>117.1</b>	<b>76.3</b>
	<b>140.2</b>	<b>124.5</b>	<b>115.9</b>	<b>108.6</b>	<b>112.2</b>	<b>50.0</b>
<b>Tax incomes, total</b>	<b>143.0</b>	<b>118.6</b>	<b>123.1</b>	<b>119.2</b>	<b>121.0</b>	76.3
	<b>143.0</b>	<b>119.2</b>	<b>117.0</b>	<b>112.6</b>	<b>115.2</b>	50.0
<i>Profit and income tax</i>	142.8	122.5	127.7	117.4	117.3	76.3
	142.8	122.5	123.7	109.8	113.2	50.0
<i>Taxes on goods and services, including:</i>						
	147.3	118.8	117.5	119.3	121.0	76.3
	147.3	118.8	114.1	114.8	116.8	50.0
- VAT	137.6	116.8	114.7	115.4	117.1	76.3
	137.6	116.8	110.3	110.5	112.1	50.0
<i>Foreign trade taxes, including:</i>	188.8	135.6	112.7	105.2	107.6	76.3
	188.8	135.6	102.6	89.5	94.3	50.0
- import duties	131.6	120.7	116.4	119.7	121.6	76.3
	131.6	120.7	113.2	115.0	117.0	50.0
- export duties	206.8	138.0	112.0	102.7	104.7	76.3
	206.8	138.0	100.7	84.5	88.2	50.0

**THE CONSOLIDATED BUDGET EXPENDITURES DYNAMICS, % to the previous year**

	2005	2006	2007	2008	2009	brent price, \$/bl in 2009
Expenditures, total	127.3	130.6	118.3	118.4	117.3	76.3
	127.3	123.5	120.7	120.6	115.7	62.0
	127.3	130.6	118.8	115.5	115.9	50.0

**Consolidated Budget Expenditures dynamics, % to the previous year**



THE PUBLIC CINSUMPTION in constunt prices of 2003, % to the previous year

	2005	2006	2007	2008	2009	brent price, \$/bl in 2009
Public consumption in constant prices of 2003	101.7	102.6	102.3	101.4	102.1	76.3
	101.7	102.3	102.1	102.1	101.8	62.0
	101.7	102.6	102.4	101.4	102.0	50.0

